

# VILLA SARASIN

Adjacent to Palexpo and lovingly restored in 1993, this former 19th century manor offers 300 m<sup>2</sup> of space on each of 4 levels.

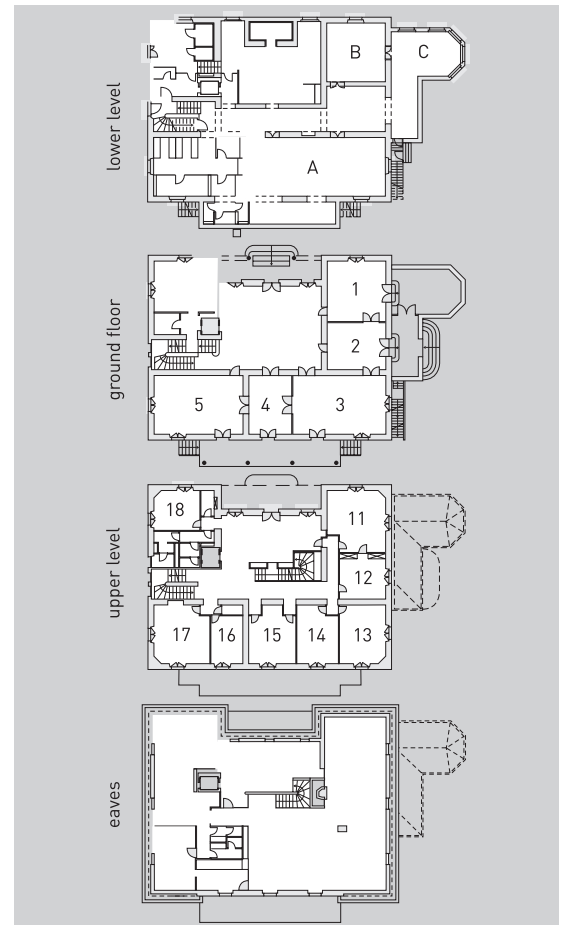
- lower level: 3 dining rooms (capacity: 110 guests)
- ground floor: spacious lobby, 5 deluxe lounges, 1 veranda and 1 terrace (capacity: 350 guests)
- first floor: 8 small lounges available as office space or meeting rooms
- under the eaves: reception lounge with piano bar and fireplace

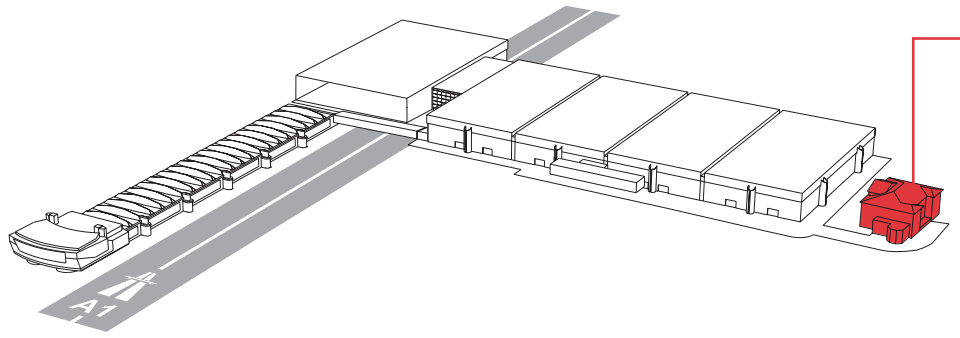
## Included in rental charge

- tables and chairs in u-shape
- overall lighting
- power supply 2 kW
- fire protection
- air cooling: dining room (lower level) and bar under the eaves
- wifi

## Available upon request

Screen, A/V equipment, sound system, microphones, audio/video recording and distribution, room interconnection, video and computer projection, videoconferencing, closed-circuit TV, Internet access





# VILLA SARASIN

	AREA (m <sup>2</sup> )	THEATRE STYLE (persons)	STYLE & CAPACITY (persons)			FUNCTION
			u-shape	banquet	cocktail	
<b>Lower level</b>						
Restaurant room A	72			70		Banquets (min. 50 participants)
Restaurant room B	32			20		
Restaurant room C	39			10		
<b>Ground floor</b>						
Lobby	82				80	Banquets (min. 50 participants)
Lounge 1	33	28	14	20	40	Cocktails
Lounge 2	26	20	10	20	30	Banquets (min. 30 participants)
Lounge 3	51	52	22	40	70	
Lounge 4	24	17	10	20	30	
Lounge 5	49	44	22	40	70	
Veranda*	25			20	30	
* access via lounge 1						
<b>Upper level</b>						
Lobby	40					Meetings, offices
Lounge 11	35	25	14			
Lounge 12	16	10	10			
Lounge 13	28	20	10			
Lounge 14	19	14	11			
Lounge 15	24	14	10			
Lounge 16	15	9	10			
Lounge 17	28	23	12			
Lounge 18	17	12	8			
<b>Eaves</b>						
Lounge and piano bar	230				50-100	Cocktails

